



Constructions Shouldn't  
look good only on  
papers



A World of Sandstone

**PADMA**  
**INTERNATIONAL**  
INDIA



# ABOUT US

It all started in the 80's. Mr. Dev Vaswani, Director Padma International, always dreamt of making a benchmark in the stone industry. He took his first step for converting his dreams into reality by laying the foundation of Padma Granites & Marbles (PGM) and slowly with his consistency and dedication and Almighty's Grace, Padma Marbles evolved into Padma International. Estd.-1999, PADMA INTERNATIONAL was inaugurated by His Holiness "SRI SRI RAVI SHANKER JI", founder of the World's Biggest NGO "THE ART OF LIVING". With his grace, today PADMA INTERNATIONAL is a renowned and trusted name in the field of Indian Sandstone. Ours is a completely Export Oriented Unit. We, at Padma International, promise to provide the BEST Service, the BEST Products and the BEST Value.



# PADMA INTERNATIONAL

QUARRY OWNERS . PROCESSORS . EXPORTERS





# OUR SPECIALITIES

Padma International mainly deals in Sandstone & Granite.

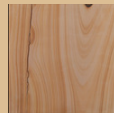
Our policy is to provide products of high and consistent quality to achieve customer satisfaction through self discipline,dedication and commitment.

With our superior material selection & value Engineering experience,we can furnish quality stone at Competitive prices.

Consistent and committed efforts of the company in offering world-class products to meet the most stringent quality standards has earned a lasting reputation as a dependable Exporter.

**Our main products** that have an electrifying demand in the International market include:-

**WOODLAND**



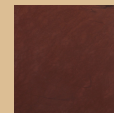
**KANDLA GREY**



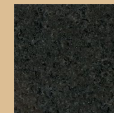
**AUTUMN BROWN**



**MANDANA RED**



**FANTASY BLACK**



**DESERT CAMEL**





## SPECIFICATIONS

### Origin:-

North West India

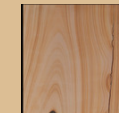
### Surface Finish:-

Natural Handcut, Calibrated, Honed, Flamed, Brushed, Leather Finish, Sandblasted, Semi Polished, Mirror Polished

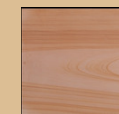
### Application:-

Steps, Sitting blocks, flooring, elevation, paving slabs, wall cladding, kerbstones, palisades, cobbles, wall stones.

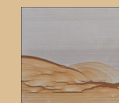
### Color variants:-



Light tone



Dark Tone



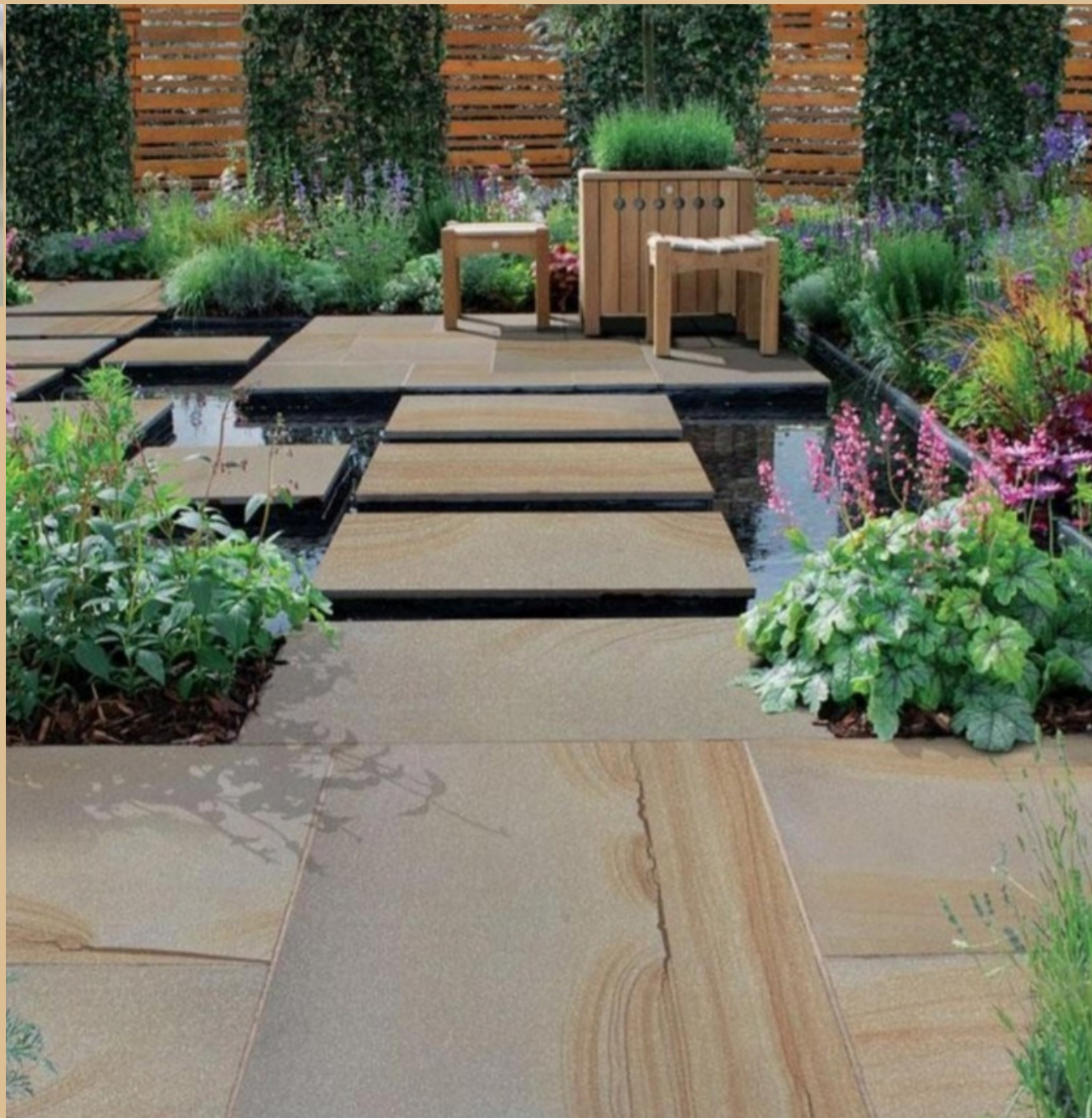
Double colour

The nature does Wonders and Woodland proves the equation right.

Blessed with a wooden look and in addition, the beautiful beige color, gives this stone a never ending story in the Stone world. Be it landscaping or the lavish interiors, this stone amazes everyone with its aesthetic appeal.

## WOODLAND





## WOODLAND APPLICATIONS

*STONE* that looks like wood.





## SPECIFICATIONS

### Origin:-

North west India

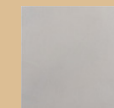
### Surface Finish:-

Natural Handcut, Calibrated, Honed, Flamed, Brushed, Leather Finish, Sandblasted, Semi Polished, Mirror Polished

### Application:-

Steps, Sitting blocks  
Flooring, Elevation,  
Paving slabs, Wall cladding,  
Kerbstones, Palisades,  
Cobbles, Wall stones.

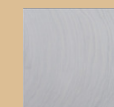
### Color variants:-



Plain



Lining



Waves



## KANDLA GREY

Who says Grey is  
Boring??

Here's Kandla Grey that  
can turn your Grey Moods  
into a completely soothing  
and calm experience.

The Kandla Grey  
applications can make any  
section look like a  
masterpiece.





## KANDLA GREY APPLICATIONS

*Life isn't Black & White. It's a million GREY areas.*





## SPECIFICATIONS

### Origin:-

North West India

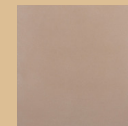
### Surface Finish:-

Natural Handcut, Calibrated, Honed, Flamed, Brushed, Leather Finish, Sandblasted, Semi Polished, Mirror Polished

### Application:-

Steps, Sitting blocks Flooring Elevation Paving slabs , Wall cladding, Kerbstones, Palisades, Cobbles, Wall stones

### Color Variants:-



Plain



Waves

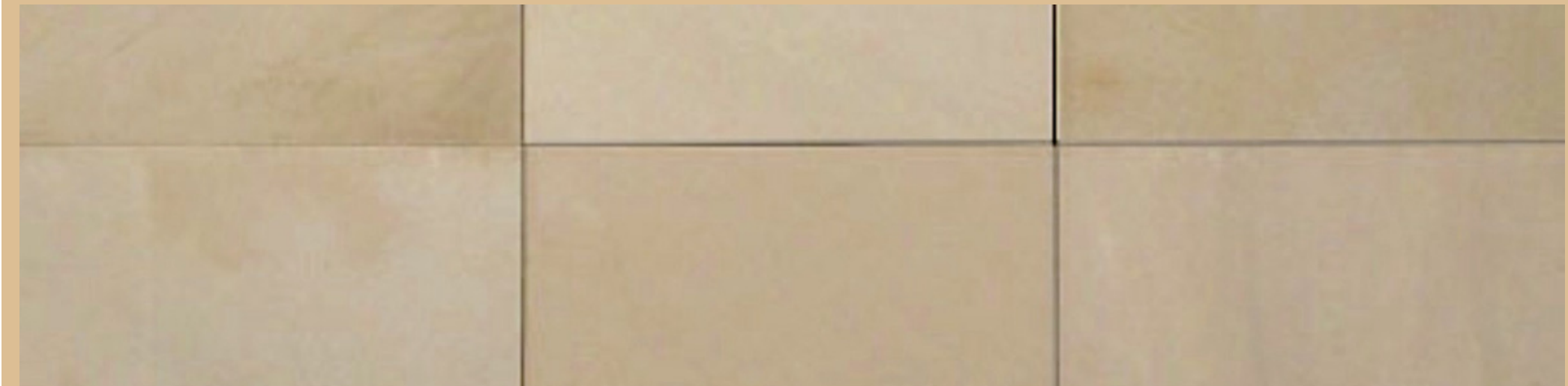


## AUTUMN BROWN

If you are looking for something appealing yet authentic, then Brown is your color. It has a magic that spells beauty all over. Nothing can overrule the sandy, dusky look that is craved by all. The color does well in its both dark & light tones. Its surely a worth for every construction.







## AUTUMN BROWN APPLICATIONS

*Stable, Solid, Reliable, Approachable, Dependable*





## SPECIFICATIONS

### Origin:-

North West India

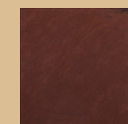
### Surface Finish:-

Natural Handcut, Calibrated, Honed, Flamed, Brushed, Leather Finish, Sandblasted, Semi Polished, Mirror Polished

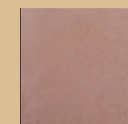
### Application:-

Steps, Sitting blocks  
Flooring, Elevation,  
Paving slabs, Wall cladding,  
Kerbstones, Palisades,  
Cobbles, Wall stones.

### Color Variants:-



Fire Red



Icy Red



There is a red for every construction. Mandana Red is the color which is a head turner. The polished finish can make it look fiery while the natural finish gives an icy soothing feel. The color has the capability to stand out alone as well as become the point of attraction amidst various other stones.

## MANDANA RED

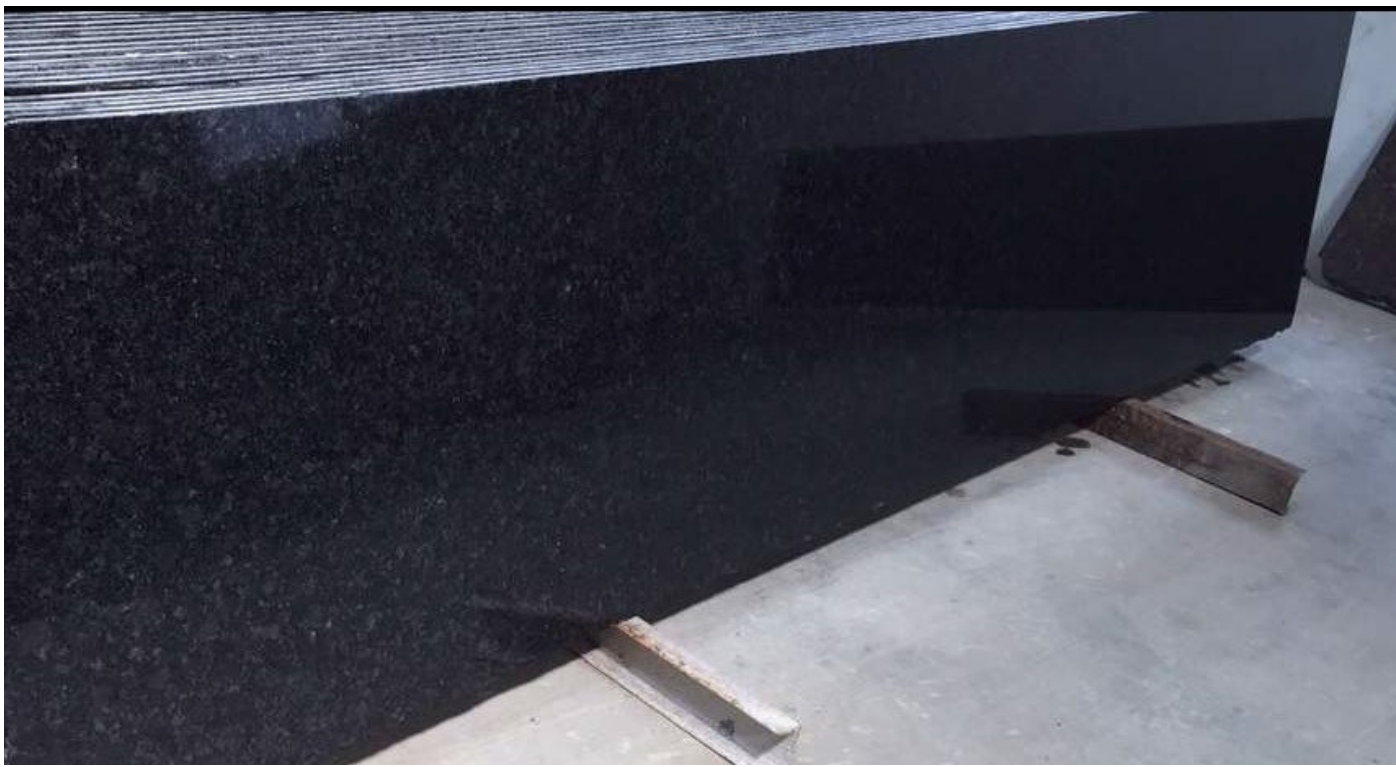




## MANDANA RED APPLICATIONS

*RED isn't just a color, it's an attitude.*





## SPECIFICATIONS

### Origin:-

North West India

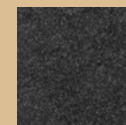
### Surface Finish:-

Honed, Flamed, Brushed, Leather Finish, Semi Polished, Mirror Polished

### Application:-

Steps, Sitting blocks Flooring, Elevation, Wall cladding, Kitchen counter tops, Table tops, Kerbstones, Palisades, Cobbles.

### Color variants:-



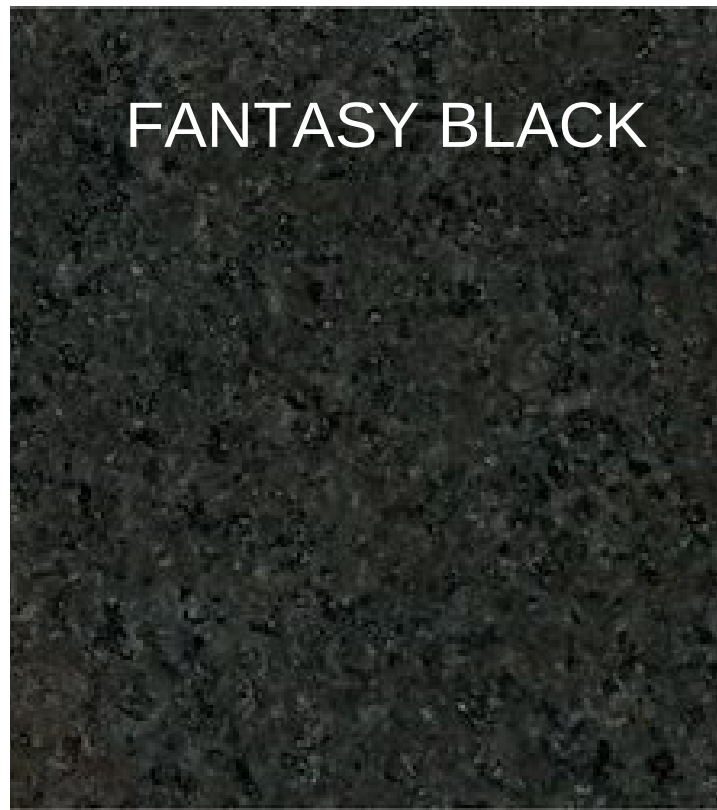
Grey Dots



Blue Dots

No one can ever say NO to BLACK, be it fashion or Stone. Introducing one of the finest Granites of Indian Granite market, FANTASY BLACK is a piece of attraction for majority of the builders and workmen in the overseas market. The Grey grains complement the Black perfectly. If you are looking for something unique yet Strong then Fantasy black is your fantasy.

## FANTASY BLACK





## FANTASY BLACK APPLICATIONS

*BLACK is more than a color.*





# SPECIFICATIONS

## Origin:-

North West India

## Surface Finish:-

Natural Handcut, Calibrated, Honed, Flamed, Brushed, Leather Finish, Sandblasted, Semi Polished, Mirror Polished

## Application:-

Steps, Sitting blocks  
Flooring, Elevation,  
Paving slabs, Wall cladding,  
Kerbstones, Palisades,  
Cobbles, Wall stones.

## Color Variants:-



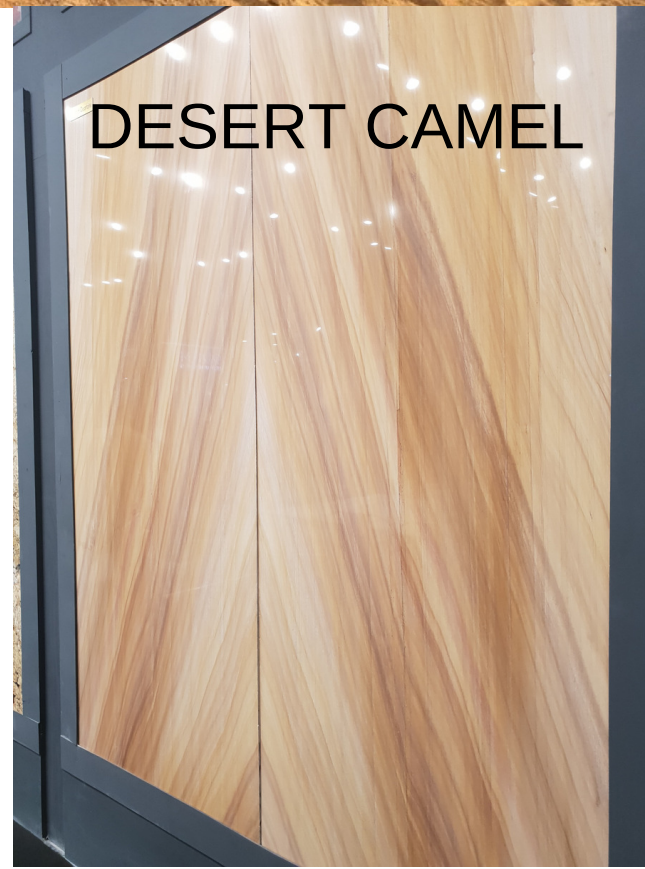
Pink lines

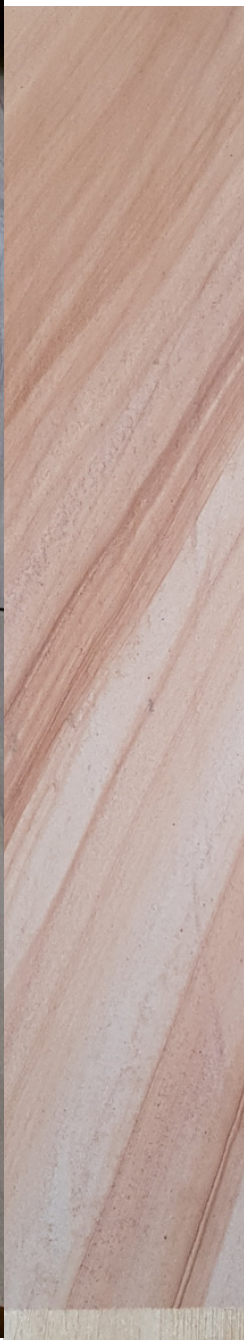


Brown lines



With the color of a desert and strength of a camel, this stone completely justifies its name. The color adds beauty to anything be it floors, pillars, elevations, table tops or walls. And above all, the exquisite lining & patterns on this stone, when used in a proper bookmark imaging, can make anything look lavish & exotic.





## DESERT CAMEL APPLICATION

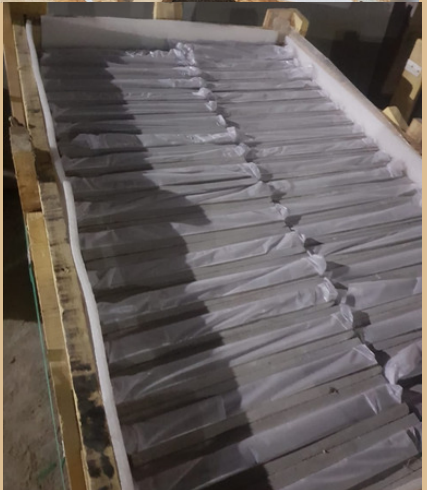
*A forest is mystery but the **DESERT** is truth*





# WHY CHOOSE PADMA INTERNATIONAL

As a one stop solution to all your stone needs, we strive hard to offer best quality and the best value. Our years of experience in the industry helps us to stand up to the expectations of our customers.

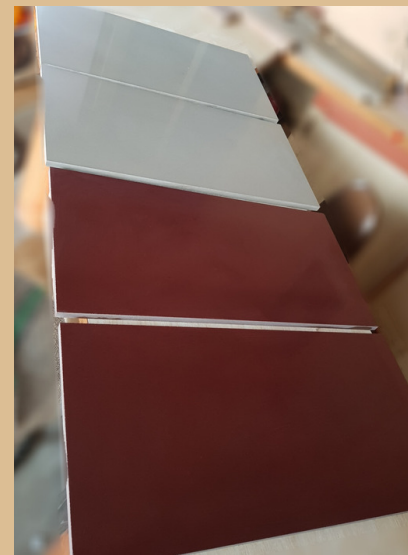


- **GUARANTEED ON TIME DELIVERIES-** Today the most valuable thing is time. We hate delays as much as our customers do. We do everything we can to ensure that all the deliveries are done on time.
- **STRICT QUALITY CHECK-** We have a separate quality control team that does inspection throughout the material processing. We follow rigid quality control procedures from the quarrying stage to the packing stage. After every stage sorting is done and the pieces that do not fit within the parameters are discarded. Eventually the end result is the Best
- **SKILLED STAFF AND LABOUR-** The employees at Padma International are highly trained and equally dedicated towards every task. For them, customer satisfaction is the biggest achievement. We do not believe in Quantity but in quality.
- **SAFE WORKING ENVIRONMENT-** We respect Humanity. For us, the safety of our employees is a necessity. Various measures have been implemented and safety equipments have been provided to each and every member of the Padma International Working Team. From Child Labour Regulations to Regular Medical Check-ups, every possible step is taken to ensure their safety.
- **CUSTOMERS, OUR BIGGEST ASSET-** We value our customers and do everything possible to ensure their happiness. That is our promise. We hope to have you as our customer soon.





# PADMA INTERNATIONAL AT A GLIMPSE





## Contact us

TEL.:-

+91 9680849645

+91 9414168055

EMAIL:-

padmainternational@gmail.com

FACTORY ADDRESS:-

G1-120,121,122 RIICO Industrial  
Area,Gudli,Udaipur,Rajasthan- 313001

INDIA

OFFICE ADDRESS-

2,Modern

Complex,Bhuwana,Udaipur,Rajasthan-313001

INDIA



A world of Sandstone

# PADMA INTERNATIONAL

INDIA

